

FOR SALE

Land - 62 Acres
Jordan, Minnesota



CONTACTS:

Fred Hedberg, CCIM, SIOR
(952) 854-8382
fhedberg@paramountre.com

WEBSITE:

www.paramountre.com

ADDRESS:

3601 Minnesota Drive
Suite 925
Bloomington, MN 55435
(952) 854-8290

FAX:

(952) 854-8295

ACORN ACRES

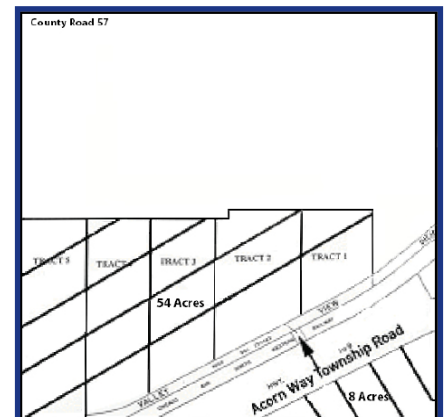
US Highway 169 and MN Highway 282
Jordan, Minnesota

FEATURES:

- ▶ Exceptional access to and visibility from Highway 169
- ▶ Zoned Agricultural/Guided Industrial and Commercial
- ▶ To be annexed into the City of Jordan upon application
- ▶ Tax Increment Financing (TIF) may be available
- ▶ City sewer and water available in near future
- ▶ Demographics are exploding
- ▶ Average of 21,900 vpd on Highway 169 (MNDOT 2012)
- ▶ Rail available

LAND SPECIFICS:

- ▶ Total size is 62 acres; approximately 54 acres buildable
- ▶ Site is divisible
- ▶ Survey, soil tests, and Phase I environmental available





FOR SALE

Acorn Acres - Land US Highway 169 and MN Highway 261 Jordan, Minnesota

PARCEL SIZE:	Approximately 62 acres
PRICE:	Negotiable
PID:	109240270
COUNTY:	Scott County
ZONING/USES:	Agricultural/Guided Industrial and Commercial
COMMENTS:	<ul style="list-style-type: none">• City sewer and water available in the near future• Exceptional visibility to Highway 169• TIF (Tax Increment Financing) available• To be annexed into the City of Jordan upon application• Rail service available

For further information contact:
PARAMOUNT REAL ESTATE CORP/TCN WORLDWIDE
Fred Hedberg, CCIM, SIOR
952.854.8382
fhedberg@paramountre.com

◆ 3601 Minnesota Drive, Suite 925, Bloomington, MN 55435 ◆

Information is deemed reliable; however, no warranty or representation is made as to its accuracy or completeness.
Property is subject to price change, prior sale or lease, and withdrawal from the market, all without notice.